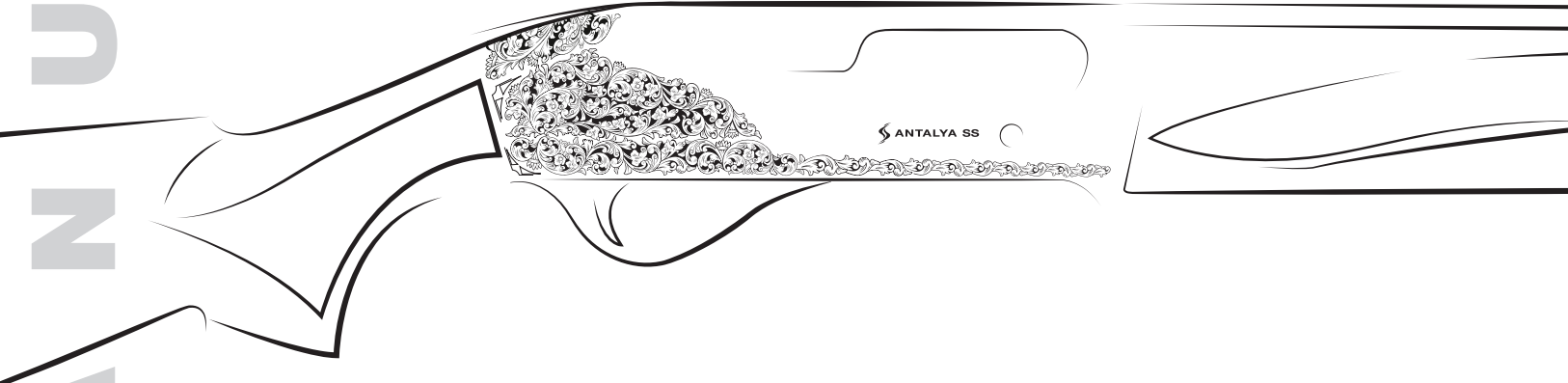


M  
A  
N  
U  
A  
L



**RETAY**



# Antalya SS Line

Use • Maintenance • Spare Parts



## **WARNING**

This product can expose you to chemicals including lead, which is known to the State of California to cause cancer and birth defects or other reproductive harm. For more information go to [www.P65Warnings.ca.gov](http://www.P65Warnings.ca.gov)

## **Index**

Basic safety rules .....	2
Introduction .....	5
Warranty .....	5
Assembly .....	6
Gun Safety Catch .....	9
Loading .....	10
Cartridge Replacement .....	12
Unloading .....	13
Troubleshooting .....	14
Choice of Ammunition .....	14
Maintenance .....	15
Shotgun Stripping .....	16
Accessories and Adjustment .....	20

## BASIC SAFETY RULES

**WARNING:** PLEASE READ THIS MANUAL BEFORE HANDLING YOUR FIREARM

**WARNING:** FIREARMS CAN BE DANGEROUS AND CAN POTENTIALLY CAUSE SERIOUS INJURY, DAMAGE TO PROPERTY OR DEATH, IF HANDLED IMPROPERLY. THE FOLLOWING SAFETY RULES ARE AN IMPORTANT REMINDER THAT FIREARM SAFETY IS YOUR RESPONSIBILITY.

### 1. NEVER POINT A FIREARM AT SOMETHING THAT IS NOT SAFE TO SHOOT.

Never let the muzzle of a firearm point at any of your body or at another person. This is especially important when loading or unloading the firearm. When you are shooting at a target, know what is behind it. Some bullets can travel over a mile. If you miss your target or if the bullet penetrates the target, it is your responsibility to ensure that the shot does not cause unintended injury or damage.

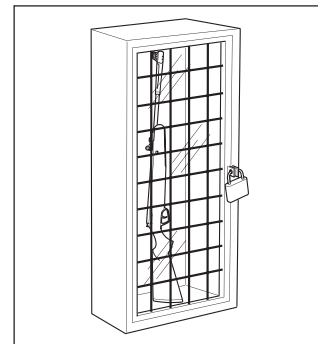
### 2. ALWAYS TREAT A FIREARM AS IF IT WAS LOADED

Never assume that a firearm is unloaded. The only certain way to ensure that a firearm has an empty chamber is to open the chamber and visually and physically examine the inside to see if a round is present.

Removing or unloading the magazine will not guarantee that a firearm is unloaded or cannot fire. Shotguns and rifles can be checked by removing all rounds and by then opening and inspecting the chamber for any remaining rounds can be made.

### 3. STORE YOUR FIREARM SO THAT CHILDREN CANNOT GAIN ACCESS TO IT.

It is your responsibility to ensure that children under the age of 18 or other unauthorized persons do not gain access to your firearm. To reduce the risk of accidents involving children, unload your firearm, lock it and store the ammunition in a separate locked location. Please note that devices intended to prevent accidents - for example, cable locks, chamber plugs, etc. - may not prevent use or misuse of your firearm by a determined person. Firearm storage in a steel gun safe may be more appropriate to reduce the likelihood of intentional misuse of a firearm by an unauthorized child or person.



#### 4. NEVER SHOOT AT WATER OR AT A HARD SURFACE.

Shooting at the surface of water or at a rock or other hard surface increases the chance of ricochets or fragmentation of the bullet or shot, which can result in the projectile striking an unintended or peripheral target.



#### 5. KNOW THE SAFETY FEATURES OF THE FIREARM YOU ARE USING, BUT REMEMBER: SAFETY DEVICES ARE NOT A SUBSTITUTE FOR SAFE HANDLING PROCEDURES.

Never rely solely on a safety device to prevent an accident. It is imperative that you know and use the safety features of the particular firearm you are handling, but accidents can best be prevented by following the safe handling procedures described in these safety rules and elsewhere in the product manual. To further familiarize yourself with the proper use of this or other firearms, take a Firearms Safety Course taught by an expert in firearms use and safety procedures.

#### 6. PROPERLY MAINTAIN YOUR FIREARM.

Store and carry your firearm so that dirt or lint does not accumulate in the working parts. Clean and oil your firearm, following the instructions provided in this manual, after each use to prevent corrosion, damage to the barrel or accumulation of impurities which can prevent use of the gun in an emergency. Before loading your firearm, always check the barrel internal part and the chamber to ensure that they are clean and free from obstructions. Firing with an obstruction in the barrel or chamber can rupture the barrel and injure you or others nearby. In the event you hear an unusual noise when shooting, stop firing immediately, engage the manual safety and unload the firearm. Make sure the chamber and barrel are free from any obstruction, like a bullet blocked inside the barrel due to defective or improper ammunition.



#### 7. USE PROPER AMMUNITION.

Only use factory-loaded, new ammunition manufactured to industry specifications: CIP (Europe and elsewhere), SAAMI® (U.S.A.). Be certain that each round you use is in the proper caliber or gauge and type for the particular firearm. The caliber or gauge of the firearm is clearly marked on the barrels of shotguns and on the slide or barrel of pistols. The use of reloaded or remanufactured ammunition can increase the likelihood of excessive cartridge pressures, case-head ruptures or other defects in the ammunition that can cause damage to your firearm and injury to yourself or others nearby.

### 8. ALWAYS WEAR PROTECTIVE GLASSES AND EARPLUGS WHEN SHOOTING.

The chance that gas, gunpowder or metal fragments will blow back and injure a shooter who is firing a gun is rare, but the injury that can be sustained in such circumstances can be severe, including the possible loss of eyesight. A shooter must always wear impact resistant shooting glasses when firing any firearm. Earplugs or other high-quality hearing protectors help reduce the chance of hearing damage from shooting.



### 9. NEVER CLIMB A TREE, FENCE OR OBSTRUCTION WITH A LOADED FIREARM.

Open and empty the chamber of your firearm and engage the manual safety catch before climbing or descending a tree or before climbing a fence or jumping over a ditch or other obstruction. Never pull or push a loaded firearm toward yourself or another person. Always unload the firearm, visually and physically check to see that the magazine, loading mechanism and chamber are unloaded and that the bolt is open before handing the firearm to another person. Never take a firearm from another person unless it is unloaded, visually and physically checked to confirm it is unloaded, and the action is open.



### 10. AVOID ALCOHOLIC BEVERAGES OR JUDGMENT/REFLEX IMPAIRING MEDICATION WHEN SHOOTING.

Do not drink and shoot. If you take medication that can impair motor reactions or judgment, do not handle a firearm while you are under the influence of the medication.

### 11. NEVER TRANSPORT A LOADED FIREARM.

Unload a firearm before putting it in a vehicle (chamber empty, magazine empty). Hunters and target shooters should load their firearm only at their destination, and only when they are ready to shoot. If you carry a firearm for self-protection, leaving the chamber unloaded can reduce the chance of an unintentional discharge.



### 12. LEAD WARNING.

Discharging firearms in poorly ventilated areas, cleaning firearms, or handling ammunition may result in exposure to lead and other substances known to cause birth defects, reproductive harm, and other serious physical injury. Have adequate ventilation at all times. Wash hands thoroughly after exposure.

**WARNING:** It is YOUR responsibility to know and abide by Federal, State and Local laws governing the sale, transportation and use of firearms in your area.

**WARNING:** This firearm has the capability of taking your life or the life of someone else! Always be extremely careful with your firearm. An accident is almost always the result of not following basic firearm safety rules. Especially for U.S. consumers: For information about Firearm Safety Courses in your area, please visit the National Rifle Association's web site at [www.nra.org](http://www.nra.org)



## Introduction

Retay Arms is proud to introduce the line of semi-automatic shotguns, a result of painstaking work at Retay's Research and Development Center and of Retay's extensive experience in precision engineering and technical know-how.

The small number of components, an extremely simple operating principle, the innovativeness of the turning block bolt locking system, removable trigger system, monobloc barrel, removable ejector and the new comfortable design with quality materials, make the Retay shotguns highly reliable and practical, easy to strip and upkeep to the extent that the shotguns can be considered the most modern, accurate, safe, fast and elegant shotguns available today.

## Warranty

Warranty terms are given in the warranty certificate. Retay Arms will not be held responsible for consequential damage derived from the use of improper ammunition, lack of maintenance, or from accidents resulting from misuse of the arm.

**WARNING:** The use of non-Retay original parts on the firearm voids the warranty.

## Assembly from packaged gun

Components of the package (fig. 1):

- a) stock-receiver-bolt-fore-end unit
- b) barrel-breech unit
- c) cocking lever

Assembly procedure

1) Insert completely the cocking lever into the breech bolt unit (fig. 2).

2) Unscrew the fore-end cap (figs. 3-4).

3) Remove the fore-end by sliding it forward along the magazine tube (fig. 5).

4) Take the stock-receiver-bolt unit with a hand; with the other hand, using the cocking lever, bring the bolt into open position (until locked) (fig. 6).





**WARNING:** Should the bolt fail to engage, move the cartridge drop lever as arrowed and repeat the operation (fig.7).

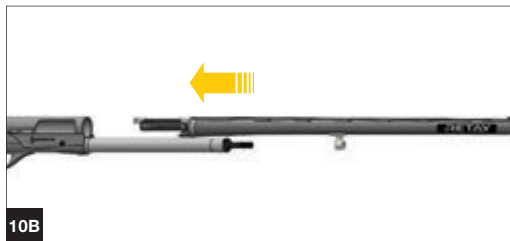
**WARNING:** please remember to remove the plastic barrel sheath before using the firearm (fig. 8).

During this operation the bolt group should be completely assembled and placed in the receiver, in open position (backward).

5) While holding the shotgun with your hand (fig.9), take the breech-barrel-fore-end assembly with the other hand.

6) Slide the upper receiver into the lower receiver, then make sure that the magazine tube slides on the barrel ring while assembling the barrel into the receiver. (fig. 10a, 10b, 10c)

**NOTE:** Make sure that the upper receiver does not collide against the bolt locking head but rather that it fits between the cover and the locking head.



7) Slide the fore-end along the magazine tube (fig. 11)

8) Screw the fore-end cap and its spring on the magazine tube end, then tighten them firmly until the barrel and the fore-end are perfectly locked to the receiver (figs. 12-13).

**NOTE:** Always make sure that the cap spring is inserted in the cap itself (fig. 12) before locking the barrel and fore end to the receiver: a missing spring will not allow proper locking of the barrel, causing serious damage to the shotgun.

9) Close the bolt by pressing the special carrier control button (fig. 14).



## Gun safety catch

Press the safety button on the trigger guard until its red ring, indicating firing position, is no longer visible (figs. 15-16).

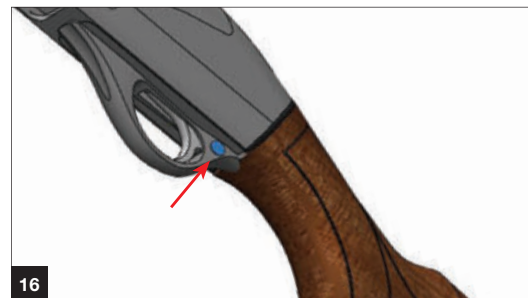
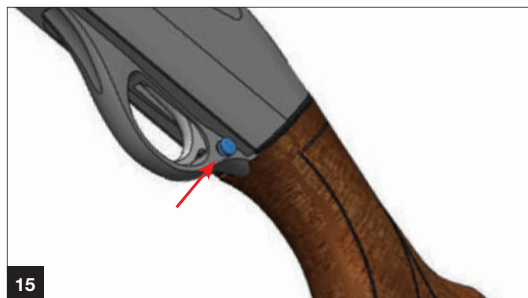
### Loading

Before starting any operation on your shotgun, make sure that the chamber and the magazine are unloaded! (Carefully read the instructions on gun loading and unloading).

**NOTE:** make sure that your firearm is fitted with a magazine tube containing a number of cartridges permitted by legislation in the country where you intend to use it.

The feed magazine holds 1, 2, 3 or 4 cartridges (according to model and to local regulations).

Total firing capacity is 2, 3, 4 or 5 rounds, including the one on the chamber.



## Loading procedure

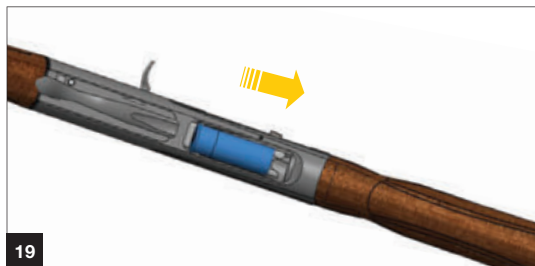
**NOTE:** make sure that the shotgun safety catch (see Gun safety catch) is engaged and the hammer cocked (so that the carrier latch can retain the cartridges as they are inserted in the magazine).

**WARNING:** for safety reasons, check if by opening the bolt the shotgun is unloaded. Then, close the bolt again.

1) The red dot on the cartridge drop lever (indicating that the hammer is cocked) (fig. 17) must be clearly visible. To bring lever to this position, press the carrier button and open the bolt by hand, then bring it to close position again (fig. 18).

2) With the bolt closed and the hammer cocked, reverse the gun pointing the barrel downwards.

3) Insert a cartridge into the magazine (fig. 19): push it until it is retained by the carrier latch which engages automatically (fig. 20). Repeat the operation until the magazine is fully loaded.



**NOTE :** the gun must be loaded with the hammer cocked so that the carrier latch can retain the cartridges as they are inserted in the magazine.

#### A) Direct procedure:

1) Open the bolt and at the same time insert a cartridge into the barrel through the case ejection port (fig. 21).

2) Release the cocking lever: the bolt will push the cartridge on the carrier into the chamber and stop in the closed position (fig. 22).

#### B) Indirect procedure:

1) Open the bolt and hold it in this position pushing, at the same time, the cartridge drop lever; in this way the first round in the magazine will be deposited onto the carrier (fig. 23).

2) Release the cocking lever: the bolt will push the cartridge on the carrier into the chamber and stop in the closed position (fig. 22).

**WARNING:** With the procedure B the number of cartridges in the magazine will be reduced by one round. A new cartridge can be inserted - see above - to fill the magazine completely.

**NOTE:** During this operation, always point the gun in a safe direction, even though the safety catch is engaged (see Gun safety catch).

Now the gun is loaded: when the safety catch is moved to firing position (red ring visible), the gun is ready for use.

**WARNING:** When your shotgun is new and before beginning to use it normally, a breaking-in period may be required before your new shotgun works perfectly with light target loads. If you experience any initial functioning problems, we recommended firing three or four boxes of standard hunting loads to allow for this break-in period.



## Cartridge replacement

(This operation must be carried out with the gun safety catch engaged and barrel pointed in a safe direction)

To replace a cartridge in the chamber, two procedures can be followed:

A) by manual replacement of a new cartridge;

B) by using the cartridge drop lever.

A) Manual replacement (when the cartridge is not coming from the magazine)

1) Rest the stock on your hip and pull the cocking lever to open the bolt: the cartridge in the chamber is extracted and ejected from the gun (fig. 24).

2) Insert a new cartridge even partially in the barrel through the special ejection window (fig. 25) and release the cocking lever to close the bolt again.

B) Using the cartridge drop lever (when the cartridge is coming from the magazine)

1) Rest the stock on your hip and pull the cocking lever to open the bolt: the cartridge in the chamber is extracted and ejected from the gun (fig. 24).

2) Press the cartridge drop lever (fig. 23) and release the cocking lever to close the bolt again. In this way, the cartridge will pass quickly from the magazine to the chamber.

## Unloading

(This operation must be carried out with the gun safety catch engaged see "Gun safety catch" and the barrel pointed in safe direction)

To unload the shotgun, proceed as follows:

1) Open the bolt: the cartridge in the chamber will be extracted and ejected (fig. 24).

2) Close the bolt: gently releasing the cocking lever (fig. 26).

3) Reverse the gun and - thrusting the carrier towards inside - press the carrier latch frontal part with your index finger (fig. 27); the first cartridge will come out (fig. 28). The carrier latch must be pressed for each released cartridge.

**WARNING:** Gun can be unloaded by repeating the operation, as described under point B of the chapter: Cartridge replacement.



24



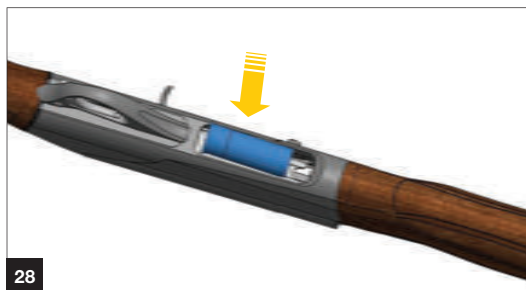
25



26



27



28

## Troubleshooting

Before starting any operation on your shotgun, make sure that the chamber and the magazine are unloaded! (Carefully read the instructions on gun loading and unloading).

### The gun fails to fire

- 1) Check the safety catch: if it is engaged, push the button to the fire position.
- 2) Check that there is a cartridge in the barrel. If necessary, insert a cartridge following the loading instructions (**Accessories and adjustments Page**).
- 3) Check the firing mechanism. If necessary, clean and lubricate it.

### Fore-end cap

Check that the fore-end cap is fitted with spring and, especially after the first rounds, check that it is tightened firmly, to keep the barrel firmly against to the receiver.

### Ammunition

Retay shotguns use the kinetic energy generated by the recoil to work the action. Always use ammunition that is powerful enough to fully cycle the action.

**WARNING:** When your shotgun is new and before beginning to use it normally, a breaking-in period may be required before your new gun works perfectly with light target loads. If you experience any initial functioning problems, we recommended firing three or four boxes of standard hunting cartridges.

## Choice of ammunition

The Retay automatic shotgun can use shells with a 65 mm (2" ½) or 70 mm (2" ¾) case, with maximum shot loads of 42 grams for 12 gauges.

As for the models with magnum barrels, besides the above types of ammunition, 76 mm (3") cartridges may be used with maximum permissible shot loads of 56 grams for 12 gauge.

Retay recommends use of shot loaded ammunitions for ribbed barrels and balls for slug barrels. This is not mandatory but will ensure top-notch performance.

**CAUTION:** Never use cartridges with a case longer than the chamber.

Non-compliance of this rule would have serious consequences for both the shotgun and the shooter.

No adjustment to the shotgun is necessary to fire any of the ammunition listed above.

Always use ammunition that is powerful enough to fully cycle the action.

All Retay shotguns are subjected to a 1500 bar burst test at the Turkish International Cooperation Activities in Ankara



## Maintenance

Before starting any operation on your shotgun, make sure that the chamber and the magazine are unloaded! (Carefully read the instructions on gun loading and unloading).

Thanks to its extreme simplicity and excellent materials, the Retay Automatic Shotgun requires no special maintenance.

The following few controls are recommended:

- 1) Normal cleaning of the barrel after use;
- 2) The firing mechanism, consisting of hammer, trigger, etc., may become clogged with any powder residuals (or foreign matters). Remove them by periodical cleaning or lubrication;
- 3) The bolt assembly may also become clogged with the same residuals mentioned and therefore must be periodically dismantled, cleaned and lubricated;
- 4) To keep the gun in good order, oiling of the parts subject to atmospheric corrosion is recommended.

**NB:** All barrels are internally chromium plated.

**NOTE:** Whilst cleaning the gun the internal choke tubes are not to be stripped out. This in order to avoid residues collecting in the barrel's internal choke tube's connection threads.

Retay recommends use of specific products for cleaning other parts (wooden, techno polymer and camouflage or painted stock and fore-end). Avoid having the parts be in contact with oils containing solvents or chemical substances in general, which could alter or damage their surfaces.

## Shotgun stripping

### For cleaning and maintenance

Before starting any operation on your shotgun, make sure that the chamber, carrier and the magazine are unloaded! (Carefully read the instructions on gun loading and unloading).

### Stripping procedure

1) Unscrew the fore-end cap (figs. 3-4). Remove the fore-end making it slide, forward along the magazine tube (fig.5)

2) Take the gun in one hand and with the other, open the bolt (fig. 29). Should the bolt fail to engage, move the cartridge drop lever as arrowed and repeat the operation (fig. 30).

3) While resting the shotgun on your hip, keep it with one hand (fig. 31) and with the other hand pull the breech-barrel- fore-end assembly out of the receiver (fig. 32).

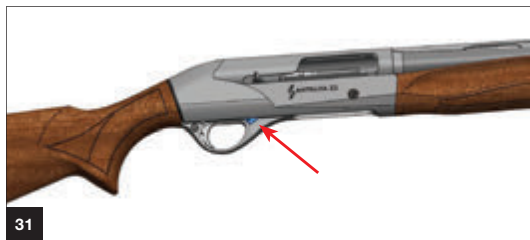
4) While holding the bolt assembly with one hand (fig. 33) so as to counter-balance the thrust of the recoil spring, push the carrier button and ease the bolt forward until the recoil spring no longer pushes it forward (fig. 34).



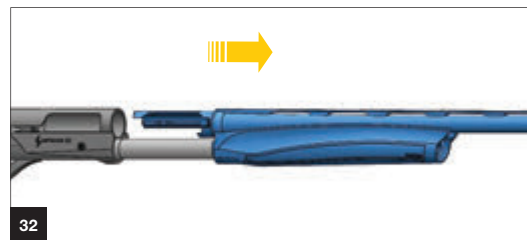
29



30



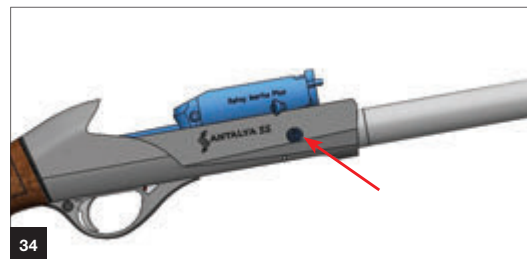
31



32



33



34

5) Pull the bolt assembly out of the receiver, sliding it along its guides (fig. 35).

6) Remove the firing pin retaining pin from the bolt assembly, while holding the firing pin and firing pin spring in place (fig. 36).

7) Remove the firing pin and firing pin spring from the bolt (fig. 37).

8) Remove the locking head rotating pin from its seat (fig. 38).

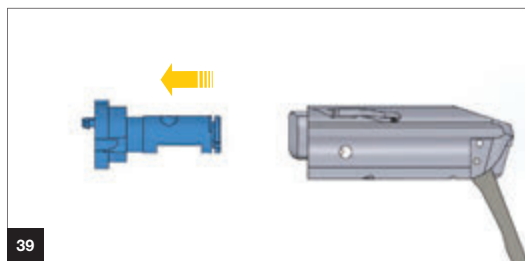
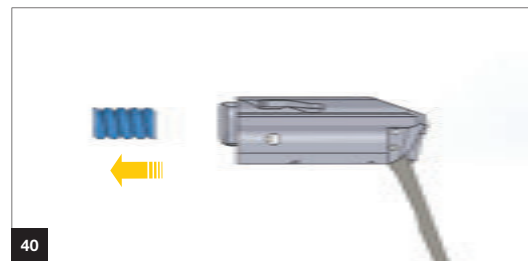
9) Remove the bolt locking head from the bolt (fig. 39).

10) Remove the recoil spring from its seat in the bolt (fig. 40).


**35**

**36**

**37**

**38**

**39**

**40**

11) Hold the shotgun as shown position and press the trigger guard lock pin with one hand (fig. 41) then move on trigger guard as shown direction

12) Press the carrier button and extract the trigger guard assembly towards in shown direction (fig. 42).

The shotgun is now completely stripped. All the parts that require routine maintenance and cleaning are disassembled.

### Shotgun assembly

For correct assembly after cleaning and maintenance operations, proceed as follows:

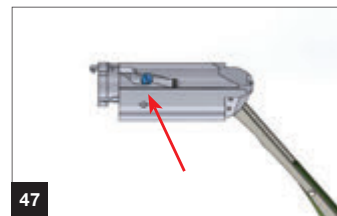
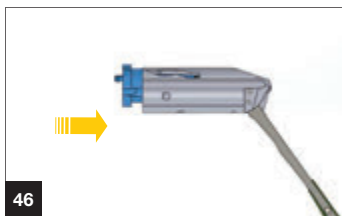
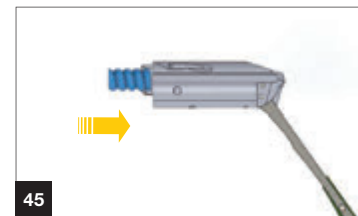
1) Grip the stock-receiver assembly and press the carrier button, insert the complete trigger guard assembly - with cocked hammer - in the receiver, positioning its frontal part up to hear click locking sound (figs. 43-44).

2) Slide the bolt recoil spring into its appropriate position (fig. 45).

**NOTE:** always make sure that the bolt recoil spring is positioned between the locking head and the bolt itself, in order to avoid a shot being fired during the closing phase

3) Slide the locking head into the bolt, making sure that the hole on its stem coincides with the slot on the bolt (fig. 46).

**WARNING:** the slanted surfaces on the locking head's stem should not be visible once the bolt locking head is mounted.



4) Insert the locking head pin in its hole on the locking head's stem, through the slot on the bolt (fig. 47).

**NOTE:** the reference line on top of the pin must be visible and aligned with the bolt assembly longitudinal axis (fig. 47).

5) Insert the firing pin and the firing pin spring inside the bolt hole (fig. 48).

**NOTE:** always make sure that the firing pin spring has been mounted

6) Insert the firing pin retaining pin in its seat, so as to block the firing pin (fig. 49).

7) Hold the stock receiver assembly almost horizontally and insert the bolt assembly in its guide on the receiver (fig. 50).

**WARNING:** make sure that the bolt link slides over the trigger guard assembly, positioning on the recoil spring guide pin inside the receiver, once the mounting has been completed (fig. 52).

8) Open the bolt acting on the locking head frontal part (fig. 52). If the bolt doesn't remain in the opened position, push the cartridge drop lever in the direction shown by the arrow and repeat the procedure.

9) Finish assembling the shotgun by following all the steps (except the first three) outlined under the section on page 8.



## Drop and cast adjustment

Before beginning any operation on your shotgun, always make sure that chamber and magazine have been completely emptied! (Carefully read loading and unloading instructions).

The shotgun is supplied with a drop change kit (fig. 53) which enables you to adjust the original drop the shotgun is supplied with. The kit consists of one stock locking plate (in steel), plus drop change shims (in plastic). Each unit is marked with the corresponding drop and cast letter. The kit enables you to obtain four different drop patterns (as specified in the following table) and two different deflections (right hand or left hand).

Determine if your stock drop fits you perfectly, or whether it is either too high or too low for you.

If it is too low, you need to select the previous adjustment set in alphabetical order (e.g. if the shim supplied on the shotgun is marked with a “C”, you must select the “B”, together with the corresponding stock locking plate).

Replacement procedure is very simple:

Stock (fig. 54-55)

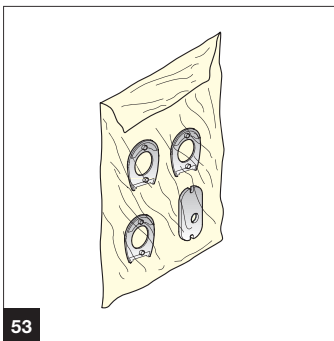
1) Unscrew the two fixing screws and remove the butt plate 1-9 (using a cross-head screwdriver).

**WARNING:** to avoid damaging the butt plates, apply a light coat of Vaseline or grease to the shaft of the screwdriver

DROP CHANGE SCHEDULE			
Cast Shim (plastic)	Stock locking plate (steel)	Drop shim (plastic)	Drop Value at heel (mm)
Reference letter	Reference letter	Reference letter	
<b>DX</b>	<b>Z DX</b>	<b>Z</b>	45 ± 1 DX
<b>SX</b>	<b>Z SX</b>		45 ± 1 SX
<b>DX</b>	<b>A DX</b>	<b>A</b>	50 ± 1 DX
<b>SX</b>	<b>A SX</b>		50 ± 1 SX
<b>DX</b>	<b>B DX</b>	<b>B</b>	55 ± 1 DX
<b>SX</b>	<b>B SX</b>		55 ± 1 SX
<b>DX</b>	<b>C DX</b>	<b>C</b>	60 ± 1 DX
<b>SX</b>	<b>C SX</b>		60 ± 1 SX
<b>DX</b>	<b>D DX</b>	<b>D</b>	65 ± 1 DX
<b>SX</b>	<b>D SX</b>		65 ± 1 SX

**Matching instructions:** The drop change kits are identified by letters. To ensure a correct drop always match locking plates and shims that have the same letters, **E.g.:** C - CDX - DX or C - CSX - SX.

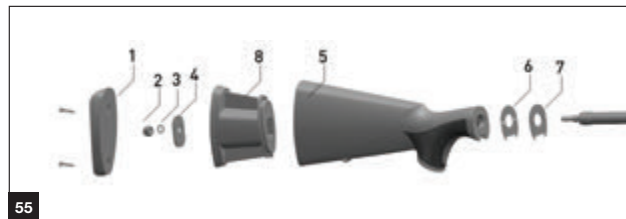
**DX=** Right Hand  
**SX=** Left Hand



53



54



55

2) Unscrew the stock retaining nut 2 (using a 13 mm hexagon wrench).

3) Take the nut 2, the lock washer 3, the stock locking plate 4, the stock 5, the cast shim 6 and the drop shim 7 out of the recoil spring tube.

**WARNING:** if the stock spacer “8” doesn’t remain inside the stock, reassemble it with the seat of plate 4 facing the butt plate.

4) Assemble the drop shim “7” that you have selected onto the recoil spring tube with the stamped letter facing the stock.

5) Reassemble the selected cast shim “6” with the stamped letter (DX or SX) facing toward the stock.

6) Point the barrel towards the floor and assemble the stock, insert the plate 4 in the stock itself with the stamped letter facing the butt plate.

7) Assemble the lock washer “3” and nut 2 on the recoil spring tube and tighten firmly.

8) Reassemble the butt plate 1 after having it aligned perfectly to the stock.

**WARNING:** Always use drop shims “7”, cast shims “6” and stock locking plates “4” with the corresponding lettering, e.g. C - CDX - DX or C - CSX SX. The use of component parts with different letters may cause permanent deformation of the recoil spring tube and as a result, bolt sliding problems.

**WARNING:** Once stock has been replaced, make sure that it is correctly retained to the receiver. After having fired the first few rounds, repeat check and if necessary, fix the stock again by removing the butt plate again and tightening the nut again by using appropriate wrench.

Having altered the stock drop of the shotgun, you have also obviously altered the firing position as well: it is therefore necessary that you first practice by executing some shots in order to make sure that the firing position is suitable to your size and shooting style

## Internal choke

Before starting any operation on your shotgun, make sure that the chamber and the magazine are unloaded! (Carefully read the instructions on gun loading and unloading). The barrels with internal chokes are equipped with various types of chokes.

**WARNING:** Before using the shotgun, make sure that the barrel has a choke correctly installed.

**WARNING:** The internal choke correctly mounted must not stick out of the barrel's muzzle. Use only the Retay internal chokes with a length which correctly fits the barrel.

To change or clean the internal choke, proceed as follows:

1) Unscrew the internal choke using the special choke wrench supplied with the shotgun and extract it completely from the barrel seat (fig. 56).

2) If the threaded seat of the choke on the barrel is too dirty, clean it.

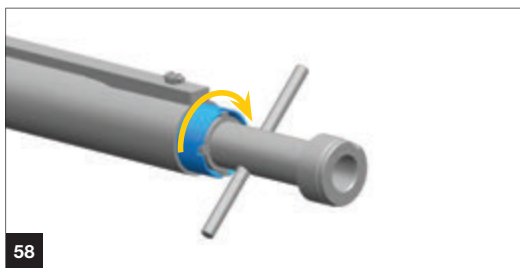
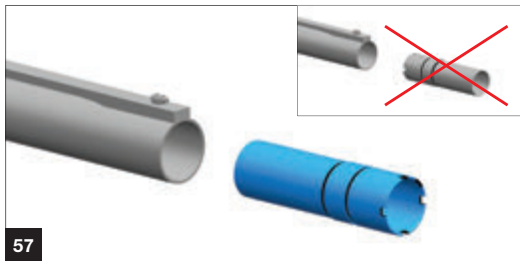
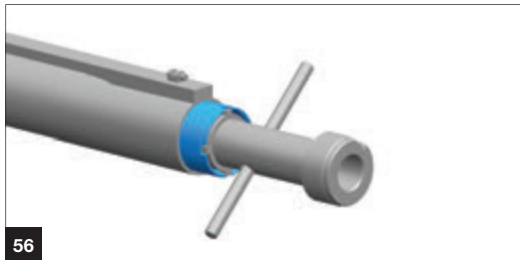
3) Reassemble the kind of choke required on the barrel seat, taking care to insert the non-threaded part inside the barrel; then screw the choke on the barrel thread (fig. 57).

**NOTE:** When choke is correctly mounted, it must not protrude from the barrel's muzzle.

4) Finish the assembly of the choke by screwing it firmly using the choke wrench (fig. 58).

**NOTE:** Before re-using the shotgun, make sure that the choke wrench has been removed from the barrel's muzzle.

Before the shotgun is put away, cleaning the internal choke and relative barrel thread is recommended.



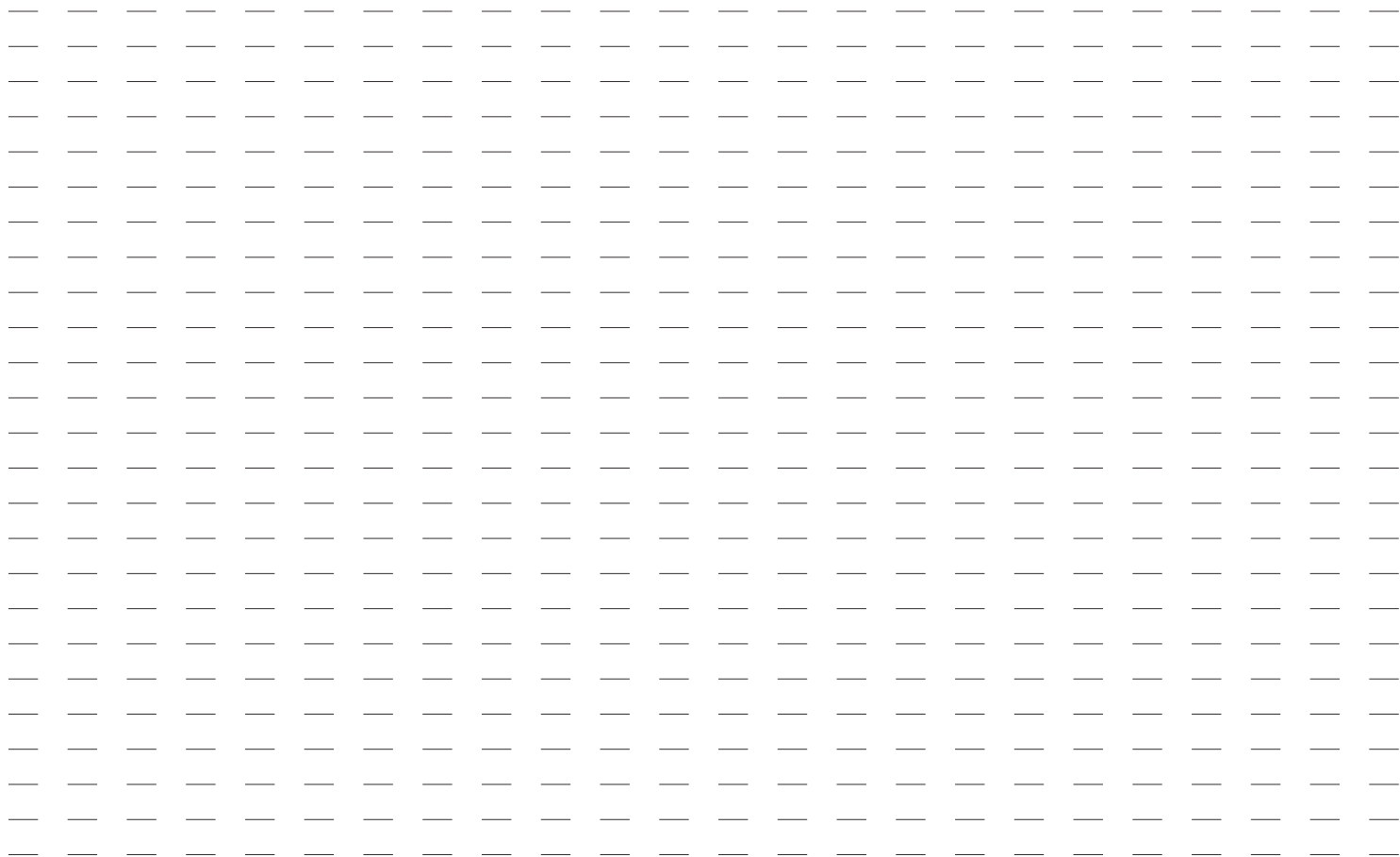


Retay chokes are marked for an easy identification. Notches on the frontal part of each choke allow a quick recognition, even when the choke is mounted on the shotgun.



A - NOTCHES  
B - SYMBOL

NOTCHES	CHOKE	SYMBOL	STEEL SHOT
I	Full	X	NO <span style="color: red;">✗</span>
II	Improved Modified	XX	NO <span style="color: red;">✗</span>
III	Modified	XXX	OK <span style="color: green;">✓</span>
IIII	Improved Cylinder	XXXX	OK <span style="color: green;">✓</span>
IIIII	Cylinder	XXXXX	OK <span style="color: green;">✓</span>

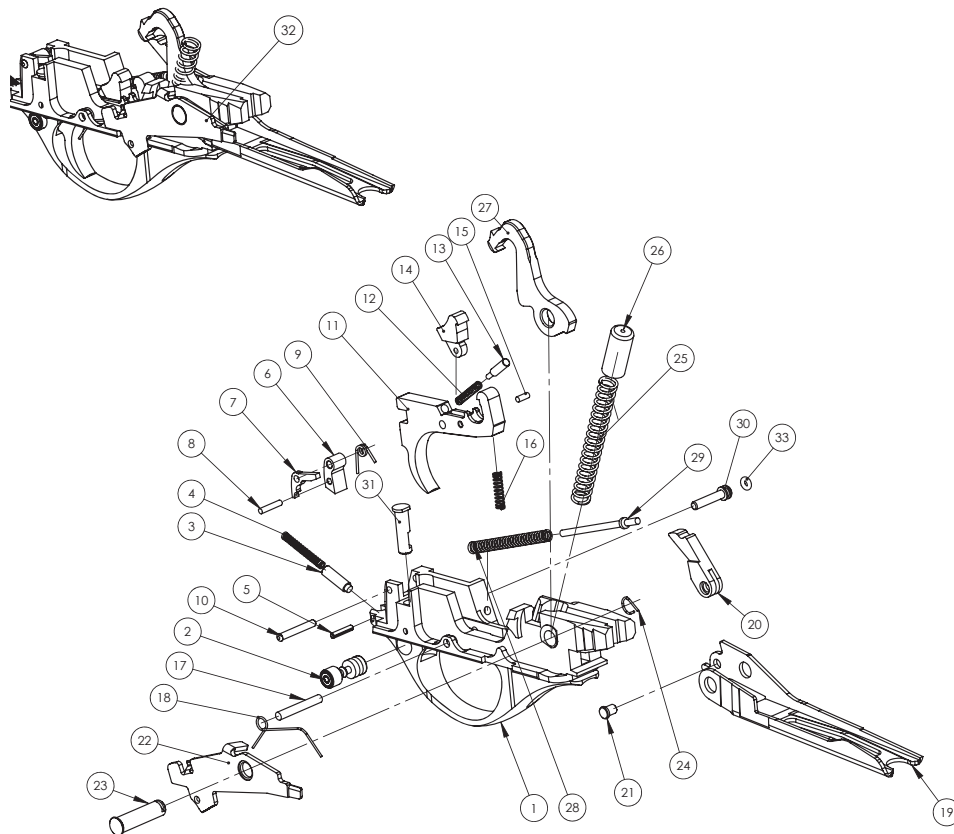


### **Spare parts list**

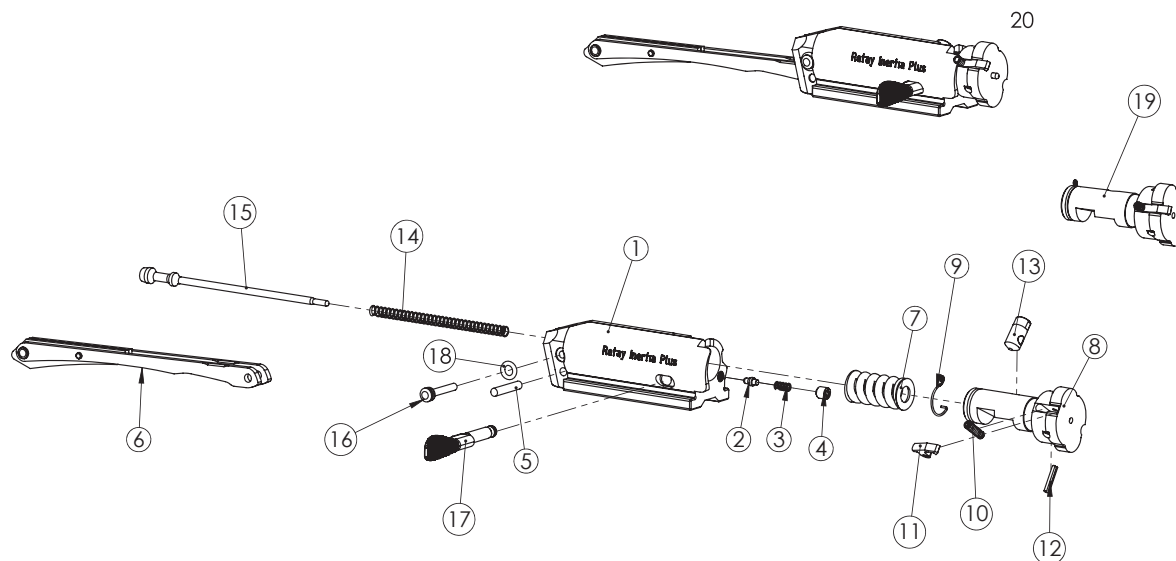
To order spare parts you must specify the gauge, the model and the serial number of your shotgun.  
Part numbers here listed refer to respective drawings.

Drawing 1

GAUGE 12



No	CODE	PART
1	MM-KRK-0022	Trigger guard
2	MM-MAN-0001	Safety button (White color)
3	MM-PIM-0011	Safety plunger
4	MM-YAY-0008	Safety plunger spring
5	MM-PIM-0012	Safety spring retaining pin
6	MM-KIL-0001	Trigger group lock
7	MM-SAC-0003	Trigger group lock plate
8	MM-PIM-0017	Trigger group lock spring pin
9	MM-YAY-0022	Trigger group lock spring
10	MM-PIM-0018	Trigger group fixing pin
11	MM-TET-0002	Trigger
12	MM-YAY-0002	Disconnecter Spring
13	MM-PIM-0001	Spring guide pin
14	MM-AAY-0001	Disconnecter hammer
15	MM-PIM-0003	Disconnecter pin
16	MM-YAY-0019	Trigger spring
17	MM-PIM-0027	Trigger pin
18	MM-YAY-0010	Cartridge drop lever spring
19	MM-KSK-0001	Carrier
20	MM-ATB-0001	Bolt stop tooth
21	MM-PIM-0008	Bolt stop tooth pin
22	MM-SAC-0001	Cartridge drop lever (white color)
23	MM-PIM-0026	Carrier pin
24	MM-YAY-0016	Trigger guard pin spring
25	MM-YAY-0011	Hammer spring
26	MM-HRK-0002	Hammer spring cap
27	MM-HRZ-0002	Hammer
28	MM-YAY-0029	Carrier spring
29	MM-PIM-0005	Bolt latch pin
30	MM-PIM-0028	Trigger pin bush
31	MM-DGM-0003	Trigger group lock button (white color)
32	MM-KRK-0010	Trigger Assembly
33	MM-ORG-0002	Trigger Guard Pin Oring

**Drawing 2**
**GAUGE 12**


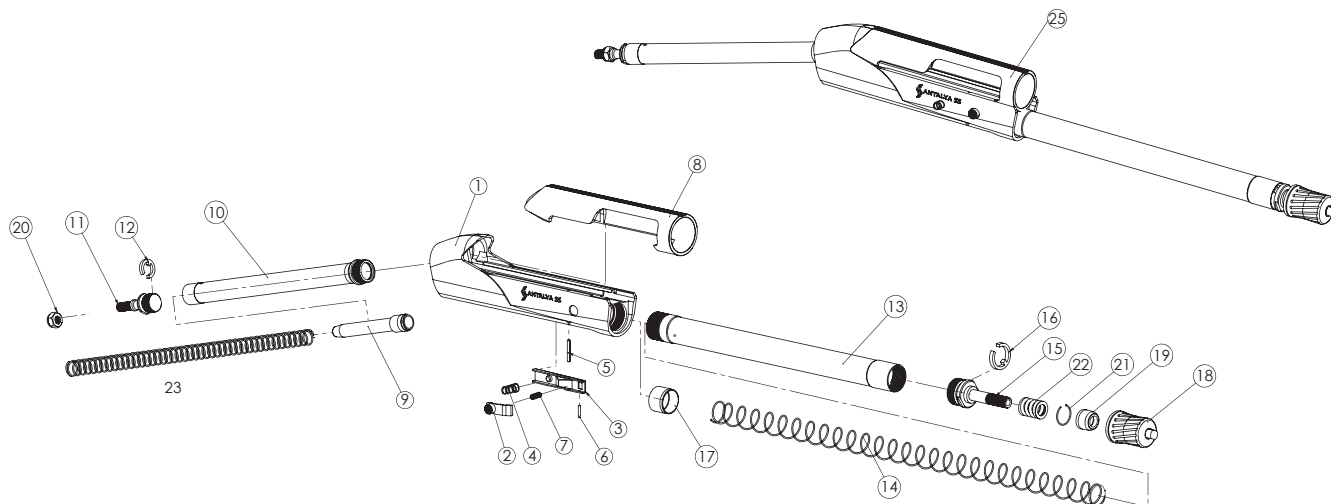
No	CODE	PART
1	<b>MM-MKZ-0003</b>	Bolt
2	<b>MM-KIL-0002</b>	Bolt handle pin
3	<b>MM-YAY-0014</b>	Bolt handle retaining spring
4	<b>MM-STK-0001</b>	Bolt handle set screw
5	<b>MM-PIM-0022</b>	Link Pin
6	<b>MM-KYR-0001</b>	Link

7	<b>MM-YAY-0006</b>	Inertia spring
8	<b>MM-DNR-0003</b>	Locking head
9	<b>MM-YAY-0023</b>	Locking head release spring
10	<b>MM-YAY-0020</b>	Extractor spring
11	<b>MM-TRN-0003</b>	Extractor
12	<b>MM-PIM-0029</b>	Extractor pin
13	<b>MM-PIM-0013</b>	Locking head pin

14	<b>MM-YAY-0013</b>	Firing pin spring
15	<b>MM-IGN-0001</b>	Firing pin
16	<b>MM-PIM-0015</b>	Firing pin retaining pin
17	<b>MM-KKL-0001</b>	Bolt handle
18	<b>MM-ORG-0001</b>	Striker Stop Pin Ring
20	<b>MM-DNR-0004</b>	Locking Head Assembly
19	<b>MM-MKZ-0006</b>	Bolt assembly

Drawing 3

GAUGE 12



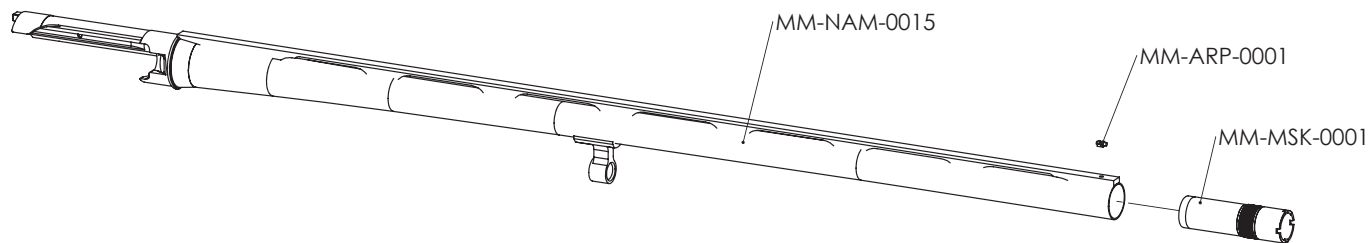
No	Code	PART
1	MM-KAS-0125	Receiver
2	MM-DGM-0001	Latch
3	MM-SAC-0008	Carrier Latch
4	MM-YAY-0021	Carrier Latch Spring
5	MM-PIM-0031	Carrier Latch Pin
6	MM-PIM-0010	Latch Pin
7	MM-YAY-0007	Latch Spring

8	MM-KEP-0051	Upper Receiver
9	MM-KYM-0001	Light Load Assembly
10	MM-BOR-0003	Recoil Spring Tube
11	MM-VID-0003	Stock Retaining Nut Screw
12	MM-SGM-0004	Elastic Washer
13	MM-BOR-0006	Magazine Tube
14	MM-YAY-0018	Magazine Spring
15	MM-VID-0007	Magazine Tube Nut Screw

16	MM-SGM-0002	Elastic Washer
17	MM-GRL-0001	Magazine Follower
18	MM-SMN-0029	Fore-End Follower Assembly
19	MM-HRK-0003	Fore-End Spring Cover
20	MM-SMN-0001	Stock Retaining Nut
21	MM-SGM-0005	Fore-End Cover segment
22	MM-YAY-0017	Fore-End spring
23	MM-YAY-0033	Recoil Spring

Drawing 4

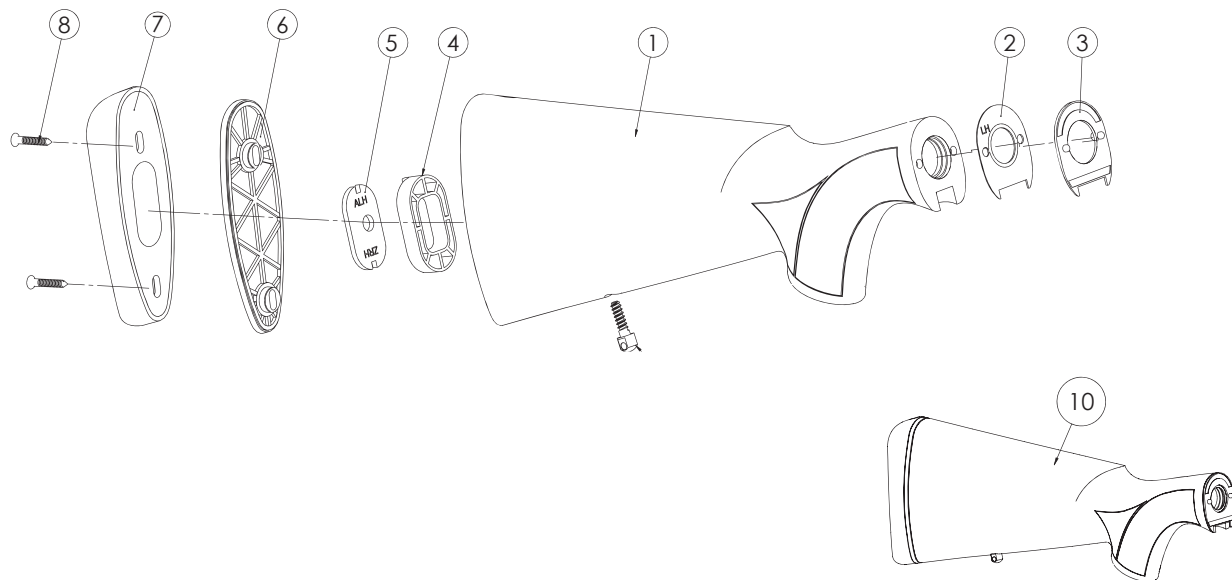
GAUGE 12



No	Code	PART
1	MM-NAM-0015	Barrel
2	MM-ARP-0001	Front sight
3	MM-MSK-0001	Internal choke

Drawing 5

GAUGE 12



No	Code	PART
1	MM-DIP-0057	Stock (Wood)
2	MM-PLS-0010	Up Down Direction Plastic
3	MM-PLS-0007	Right-Left Direction Plastic

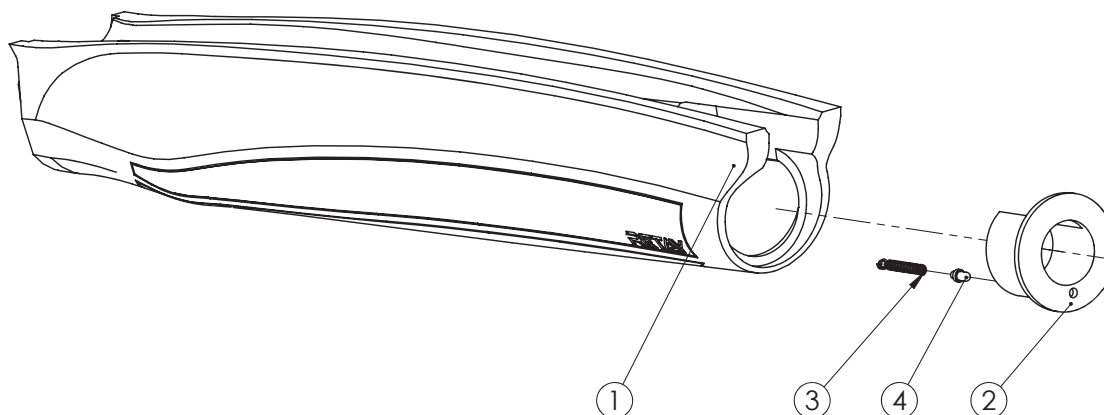
4	MM-PLS-0008	Spacer
5	MM-SAC-0006	Steel Kit
6	MM-PLS-0007	Butt Plate Inner Plastic
7	MM-OMZ-0001	Polyurethane Recoil Pad

8	MM-VID-0008	Butt Plate Screw
9	MM-VID-0014	Sling Swivel Screw
10	MM-DIP-0069	Stock Assembly (Wood)
11	MM-DIP-0024	Stock Assembly (Plastic)

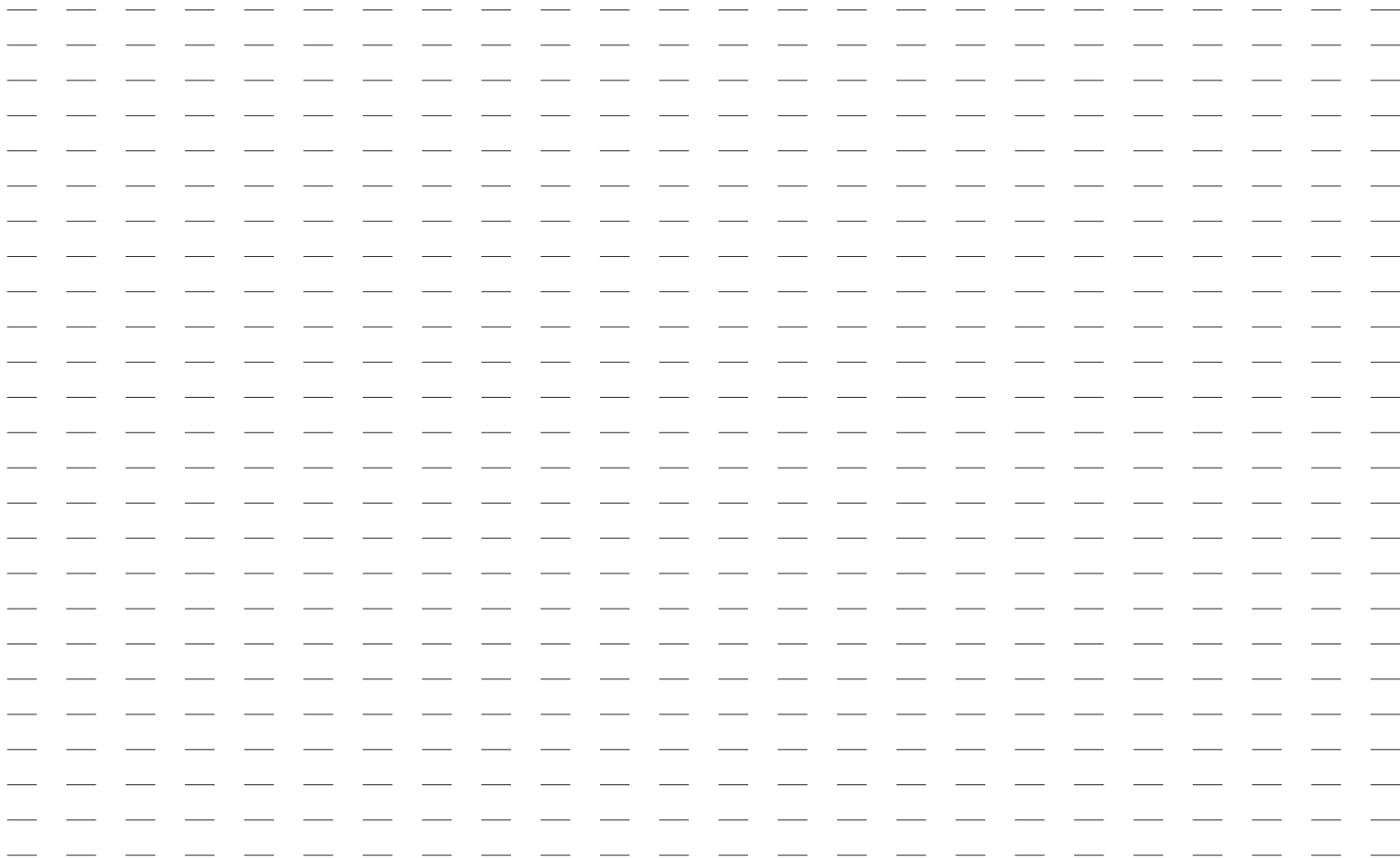


Drawing 6

GAUGE 12



No	Code	PART
1	MM-DIP-0056	Fore-end assembly (Wood)
2	MM-TET-0001	Cap retaining pin bushing assembly
3	MM-YAY-0001	Pin Screw Spring
4	MM-CIR-0001	Pin







# RETAY RETAYUSA

Retay Arms Ltd. Sti.  
Büyükkayacık Mh. 4. OSB, 103. Cd., No: 11, 42250 Konya/TURKEY  
Pbx: +90 332 342 6513 | Fax: +90 332 342 6514 | E-mail: info@retayarms.com  
www.retayarms.com - www.retayusa.com

Retay Arms reserves the right to make modifications to the products shown in this catalogue at any time without prior notice. The finishings, colour and patterns shown in this catalogue are approximate, as a printed reproduction causes inevitable colour differences. The illustrations and descriptions contained in this catalogue are only provided as an indication.

